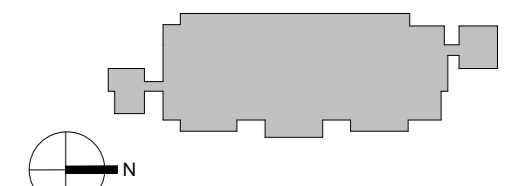


KEY PLAN



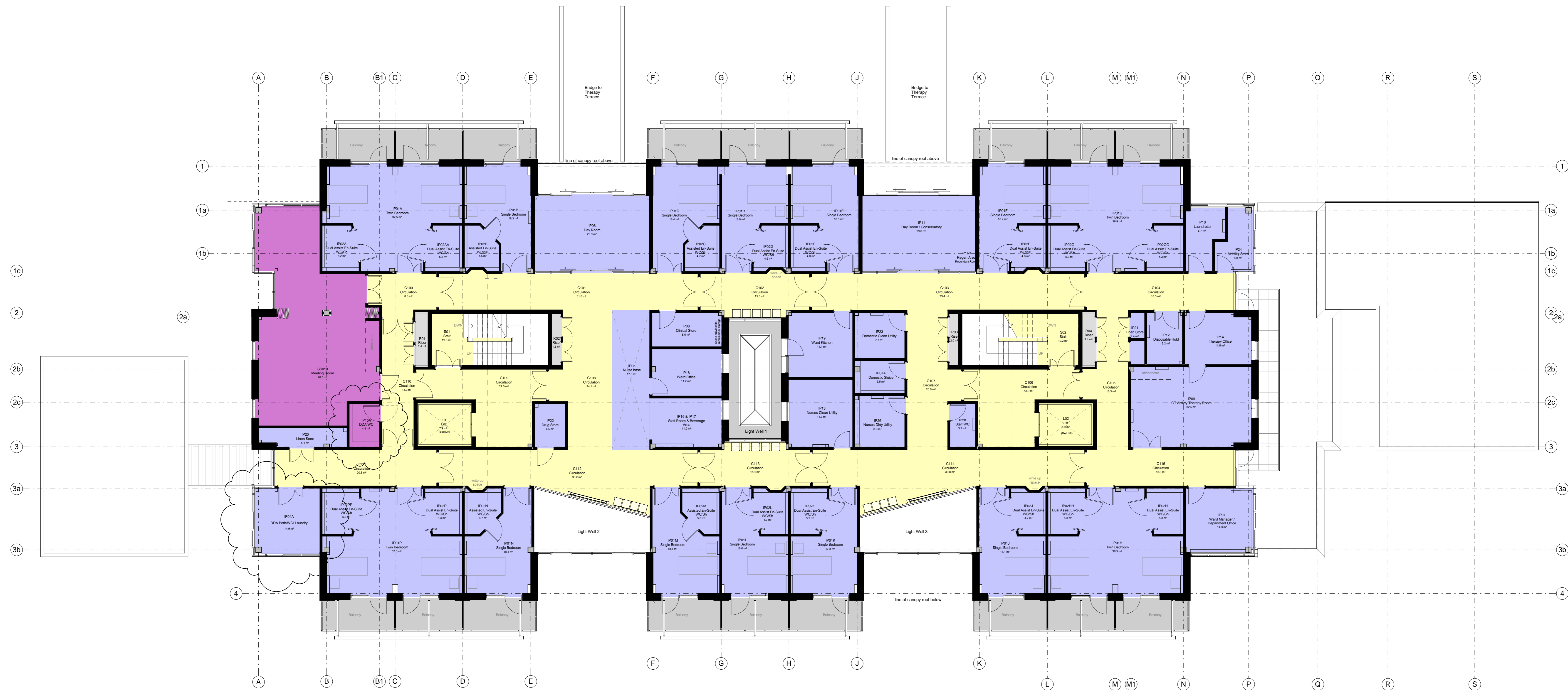
CDM RESIDUAL RISKS

THIS DRAWING HAS BEEN REVIEWED AGAINST THE DESIGN CDM ROLLING RISK REGISTER AND ANY SIGNIFICANT RESIDUAL RISKS HAVE BEEN IDENTIFIED.

MAINTENANCE/ CLEANING		SIGNIFICANT HAZARD REF
CONSTRUCTION		
DECOMMISSIONING/ DEMOLITION		

NOTES

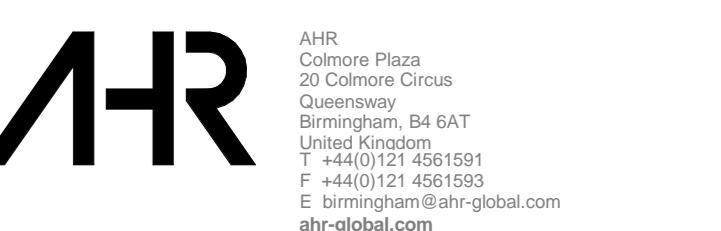
WC have been relabelled to meet Trust clarifications on types used throughout the scheme.



1 GA Plan Level 01 - First Floor  
1 : 100

By Department Legend  
 Yellow: Circulation  
 Blue: Community Hospital in Patient Ward  
 Light Blue: Services  
 Purple: Shared Spaces

I	GA Plans Updated in line with Trust's 'Who Meeting on the 10.11.14	14.11.14	AC	EH
H	Issued for information	29.10.14	AC	EH
G	Amendments made in conjunction with design and construction development	21.10.2014	AC	EH
F	Drawings updated with Part 3 - Schedule X Document (adding partitions added to Meeting Room B5010, clinical wash hand basins, urinals and replaced with gel stations)	01.05.14	AC	MA
E	FINANCIAL CLOSE ISSUE	19.11.13	MA	MA
D	Amendments made to reflect the addition of structural columns	13.11.13	AC	MA
C	Amendments made to reflect Trust comments - revised nurse/assistant office layout	15.10.13	AC	MA
B	Amendments made to reflect 1:500 approval comments for Contractors Proposals	18.05.13	AC	MW
A	Amendments made to layout reflecting 1:500 changes done through User Group sign-off pack	25.04.13	AC	MW
Rev	Description	Date	Dr by	App by
TS		01.06.12	MW	



client name	Amber Solutions for Care
project	Townlands Community Hospital, Henley
drawing	Level 01 - Proposed First Floor Plan - Department Layout
computer file	27111\2014 10:37:30
project number	2011.01017.000
scale	1 : 100
drawing number	AED_AA20_011
rev	1
issue status	FC

Level 01 Area Schedule		
Level	Department	Area
Level 01 FFL	Circulation	379.5 m <sup>2</sup>
Level 01 FFL	Community Hospital in Patient Ward	687.3 m <sup>2</sup>
Level 01 FFL	Shared Spaces	74.9 m <sup>2</sup>
Grand total: 73		1141.8 m <sup>2</sup>

